

SERIES E HIGH FLOW SOLENOID PUMP ULKA

Pompa a vibrazione ULKA

CEME ULKA

Series E HF

HIGHLIGHTS

- Self priming at 0 bar
- Integrated diode (except. 24V)
- Thermal cutout pocket
- Full detailed electrical and hydraulic inspection
- Dry working allowed only for the self priming phase
- Available with Glow wire test - only IEC market (GWIT test 750°C IEC 60335-1)
- Ideal for steam cleaner

PRODUCT DESCRIPTION

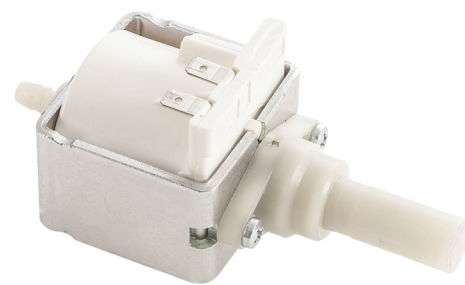
Solenoid pump series E High Flow includes the models E77 and E8. Those models are available with plastic outlet – EP and also with brass outlet – EX.

These type of pumps provide a compact solution for low pressure and high flow applications.

DESCRIZIONE PRODOTTO

Le pompe a vibrazione della serie E alta portata comprende i modelli E77 ed E8. Questi modelli sono disponibili con l'uscita in plastica, EP e con uscita in ottone, EX.

Questo tipo di pompe offrono una soluzione compatta per applicazioni con basse pressioni e alte portate.



GENERAL FEATURES / CARATTERISTICHE GENERALI

Pump body material / Materiale corpo pompa	PA66/POM (Brass outlet on EX models)	
Seal material / Materiale di tenuta	NBR (other material available upon request)	
Piston and springs / Pistone e molle	Stainless steel High corrosion resistance	
Fluid temperature / Temp. fluido	35°C	
Ambient temperature / Temp. ambiente	35°C	
Working fluids / Applicazioni fluidi	Water	
Electrical connect. / Connes. elettrica	6,3 x 0,8 fast-on terminal	
Insulation class / Classe di isolamento	F	
Hydraulic connections / Connessione idraulica	INLET: Hose barb	OUTLET: G 1/8"
Mounting position / Posizione di fissaggio	any	

SPECIFICATIONS / CARATTERISTICHE

MODEL	Voltages	ON/OFF	Class	Coil Power Watt	Approvals
E77	230V~ 50 Hz	ED 100%	F	28	VDE
	220V ~ 50-60 Hz	ED 100%	F	35	-
	120V~ 60 Hz	ED 100%	A	27	UL
	100V~ 50-60 Hz	ED 100%	F	31	-
E8	230V-240V ~ 50 Hz	ED 100%	F	26	VDE
	220V ~ 50-60 Hz	ED 100%	F	33	-
	120V~ 60 Hz	ED 100%	F	29	-
	100V~ 50-60 Hz	ED 100%	F	28	c-UL
	24V~ 50 Hz	ED 100%	F	28	-
E7	240V ~50 Hz	2/1	F	48	IMQ
	230V~ 50 Hz	2/1	F	48	IMQ/VDE
	220V~ 50 Hz	2/1	F	48	IMQ
	200V~ 50-60 Hz	2/1	F	48	-
	100V~ 50-60 Hz	2/1	F	55	-
	24V ~ 50-60 Hz	2/1	F	48	-
EF7	120V~ 60 Hz	2/1	F	52	c-UL

